

# CertainTeed Platon<sup>®</sup>

Foundation Protector

**Don't build  
without it!**

**Keeps water out,  
provides drainage**

**For a dry, healthy basement. Double  
leakage protection for:**

- Block walls
- Poured concrete walls
- Insulated concrete forms
- Existing foundations

**Easy to install!**



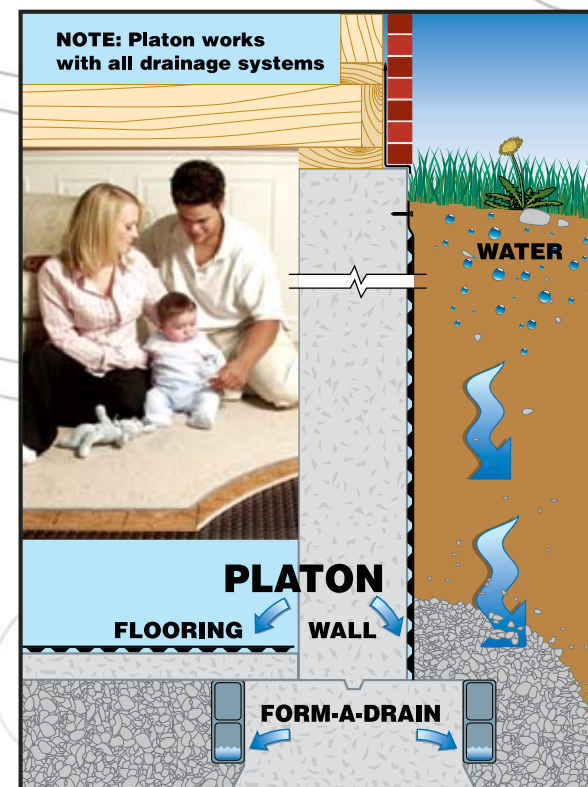
- Made of tough, durable, environmentally responsible high-density polyethylene
- Unique double-dimpled construction keeps wet soil 1/4" away from the foundation and provides a waterproof barrier that controls both interior and exterior moisture
- If water breaches the membrane, it flows through the air gap to the footing drain
- Platon easily bridges 1/4" foundation cracks and keeps working even if the wall shifts, cracks or settles
- All-weather installation
- Additional waterproofing treatments are not required, but if these are used, Platon acts as an excellent protection board

buildingresponsibly<sup>™</sup>

*CertainTeed respects the environment through the responsible development of sustainable building products and systems.*

**Exclusive USA supplier!**

**CertainTeed**  
SAINT-GOBAIN



Platon is a registered mark of Isola A/S.

**ASK ABOUT ALL OF OUR OTHER CERTAINTEED<sup>®</sup> PRODUCTS AND SYSTEMS:**  
ROOFING • SIDING • TRIM • WINDOWS • DECKING • RAILING • FENCE  
INSULATION • GYPSUM • CEILINGS • FOUNDATIONS • PIPE

CertainTeed Corporation  
P.O. Box 860  
Valley Forge, PA 19482

Professional: 800-233-8990  
Consumer: 800-782-8777  
[www.certainteed.com](http://www.certainteed.com)  
<http://blog.certainteed.com>

Code No. 40-98-01C, © 06/10 CertainTeed Corporation, Printed in the U.S.A.

**CertainTeed**  
SAINT-GOBAIN

**Platon – It's a wrap!**

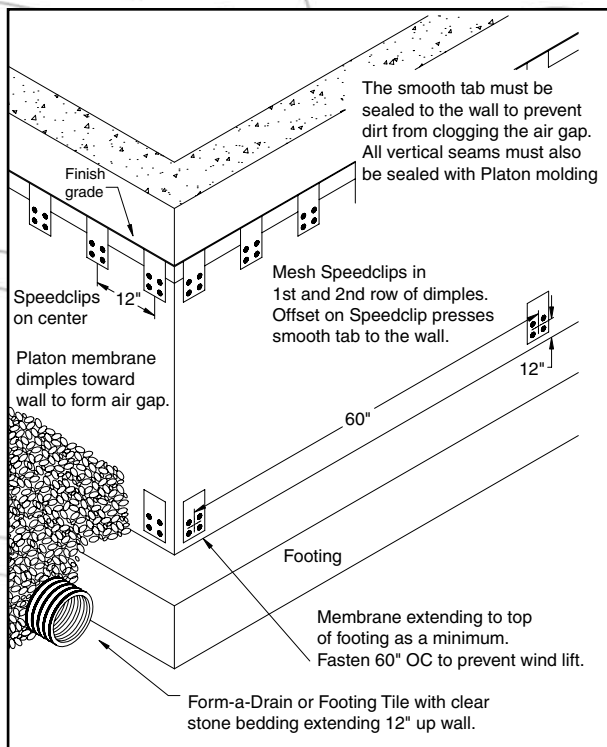
  
SAINT-GOBAIN

# What to do:

It's really very simple!

Detailed instructions are included with each roll – visit [www.certainteed.com](http://www.certainteed.com) for step-by-step photo instructions

- Chalk a line at the finished grade all around the foundation and run a generous bead of caulking 1" below the line (caulking is not necessary with Speedstrips).
- Working from left to right, unroll the membrane along the foundation, dimples toward the wall, smooth tab at the top following the chalk line.
- Fasten with Speedclips 12" OC (see diagram) OR use Speedstrips, meshing the top 2 rows of dimples – leave a 1/4" gap between each Speedstrip.
- On vertical seams, overlap by at least 20". Water entering the seam will flow to the footing drain before it gets to the wall.
- Seal any open cut areas with Platon Molding to ensure dirt can not get behind the membrane and clog the air gap - e.g. terminations and where the smooth tab has been cut away.
- **This system must be used in conjunction with a foundation footing drain.** Form-a-Drain (ICC Report No. 95-37.01) (CCMC Report No. 13492-R) is recommended as the smart 3-in-1 solution that forms footings, drains foundations and vents radon.



**platon®**  
KEEP IT DRY.

Platon meets these approvals:

USA NES Evaluation  
ESR # 2767 (Waterproofing Membrane)  
ICC 2000 International Building Code  
Canada CCMC 12266-R  
CCMC 12878-R

# What you need:

## Platon Membrane

- One roll for every 62 lineal feet of foundation (allows for joint overlap).
- Membrane can be overlapped horizontally by 6" for deep foundations.

**Platon Speedclips** – 65 per roll of membrane OR

**Platon Speedstrips** – 16 per roll of membrane

## Platon Molding

- (6'6" lengths) Typically 5 pieces per job

## Caulking

For concrete foundations, use asphalt-based roof cement. For ICF's use foam panel adhesive.

## Fasteners

- For concrete, use 1 1/4" concrete nails
- For ICF's, use 1 5/8" corrosion resistant deck screws
- Speedclips – 1 fastener per clip
- Speedstrips – 7 fasteners per strip
- Molding – 10 fasteners per piece

## Fastening Tool

Green concrete can be hand nailed as soon as the forms are stripped. Use a nail gun for block and cured concrete. For ICF's, use a cordless drill or screwdriver.